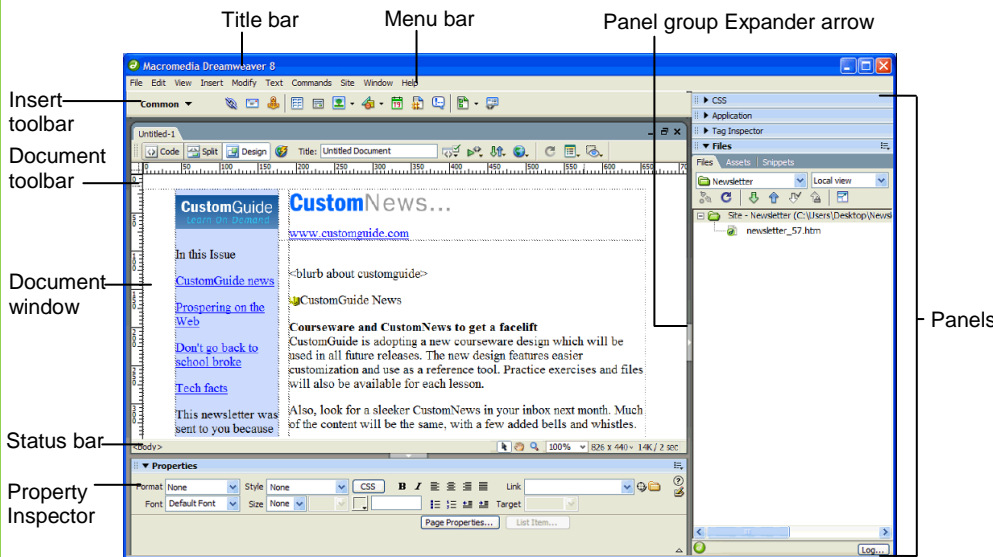


Dreamweaver 8

Quick Reference Card

Dreamweaver 8 Workspace



Keyboard Shortcuts

General

Insert Named Anchor	<Ctrl>+<Alt>+<A>
Add to Library	<Ctrl>+<Shift>+
Duplicate	<Ctrl> + <D>
Edit Style Sheet	<Ctrl>+<Shift>+<E>
Replace	<Ctrl> + <H>
Show/Hide Grids	<Ctrl> + <G>
Show Invisibles	<Ctrl>+<Shift>+<I>
Insert Image	<Ctrl> + <Alt> + <I>
Page Properties	<Ctrl> + <J>
Create Link	<Ctrl> + <L>
Remove Link	<Ctrl>+<Shift>+<L>
Insert Table Row	<Ctrl> + <M>
Delete Table Row	<Ctrl>+<Alt>+<M>
Quick Tag Editor	<Ctrl> + <T>
View Head Content	<Ctrl>+<Shift>+<W>
Show/Hide Link	<Ctrl>+<Shift>+<Y>
Switch Views	<Ctrl> + < ` >

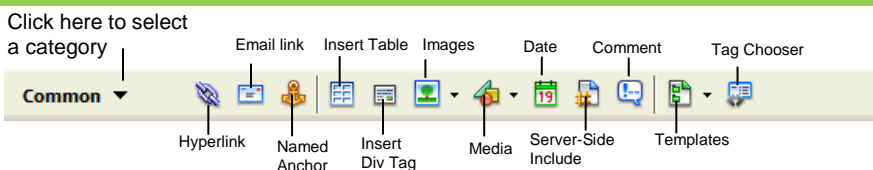
Document Toolbar

- Code View:** View or edit the page in HTML.
- Split View:** View the page in HTML code and Design view (WYSIWYG) at the same time.
- Design View:** View or edit the page in the WYSIWYG (What You See Is What You Get) editor.
- Server Debug:** View a report to debug errors on the page.
- Title:** **Title:** Type the Web page title you want to appear in the title bar of the browser.
- Check Browser Compatibility:** Check the compatibility of your document with different Web browsers.
- Validate markup:** Validate current document or tag.
- File Management:** Access already-published files or upload files directly from the document window.
- Preview:** Choose from a list of browsers installed on the computer to preview the page.
- Refresh:** Click to update changes made to the page after working on the HTML code.
- View options:** In Design view, apply a grid or ruler to the page. In Code view, change how the HTML code is displayed.
- Visual Aids:** Choose from different aids to help you design your pages.

Function Key Shortcuts

Reference	<Shift> + <F1>
Reference Panel	<Ctrl>+<Shift>+<F1>
Layers	<F2>
Frames	<Ctrl> + <F2>
Object Panel	<Ctrl> + <F2>
Behaviors Panel	<Shift> + <F3>
Property Inspector	<Ctrl> + <F3>
Hide/Show All Floating Windows	<F4>
Site Files	<F5>
Refresh Local	<Shift> + <F5>
Switch to Layout View	<Ctrl> + <F6>
Switch to Standard View	<Ctrl>+<Shift>+<F6>
Code Inspector	<F10>
History Panel	<Shift> + <F10>
Assets Panel	<F11>
CSS Styles Panel	<Shift> + <F11>
Preview in Primary Browser	<F12>
Preview in Secondary Browser	<Ctrl> + <F12>

Insert Toolbar



- Categories:** Click the **arrow** button on the left side of the Insert Toolbar and select a category:
- Common:** Includes objects commonly inserted in a Web page (ex. tables, images)
- Layout:** Insert layout tables and frames
- Forms:** Insert elements often found in a Web form (ex. text fields, option buttons, check boxes)
- Text:** Apply formatting to text (bold, italic, etc.)
- HTML:** Insert Spry data objects and other dynamic items like update forms
- Application:** Insert Recordsets, dynamic tables, record forms
- Flash:** Insert Flash elements
- Favorites:** Allows you to group the buttons you use most often

